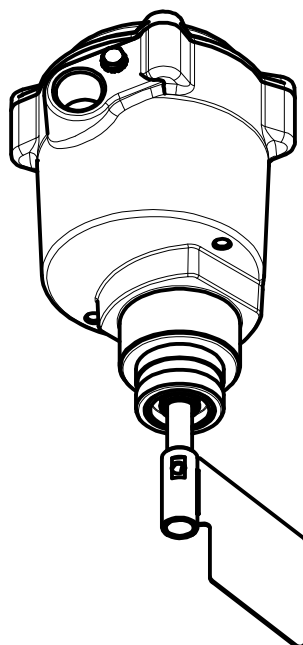


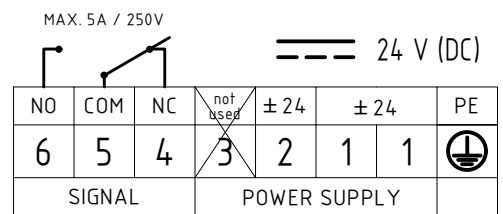
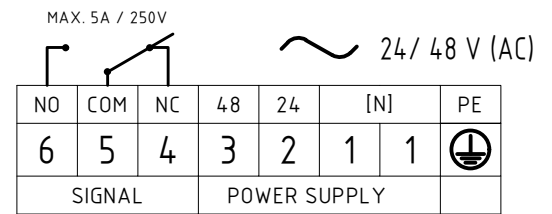
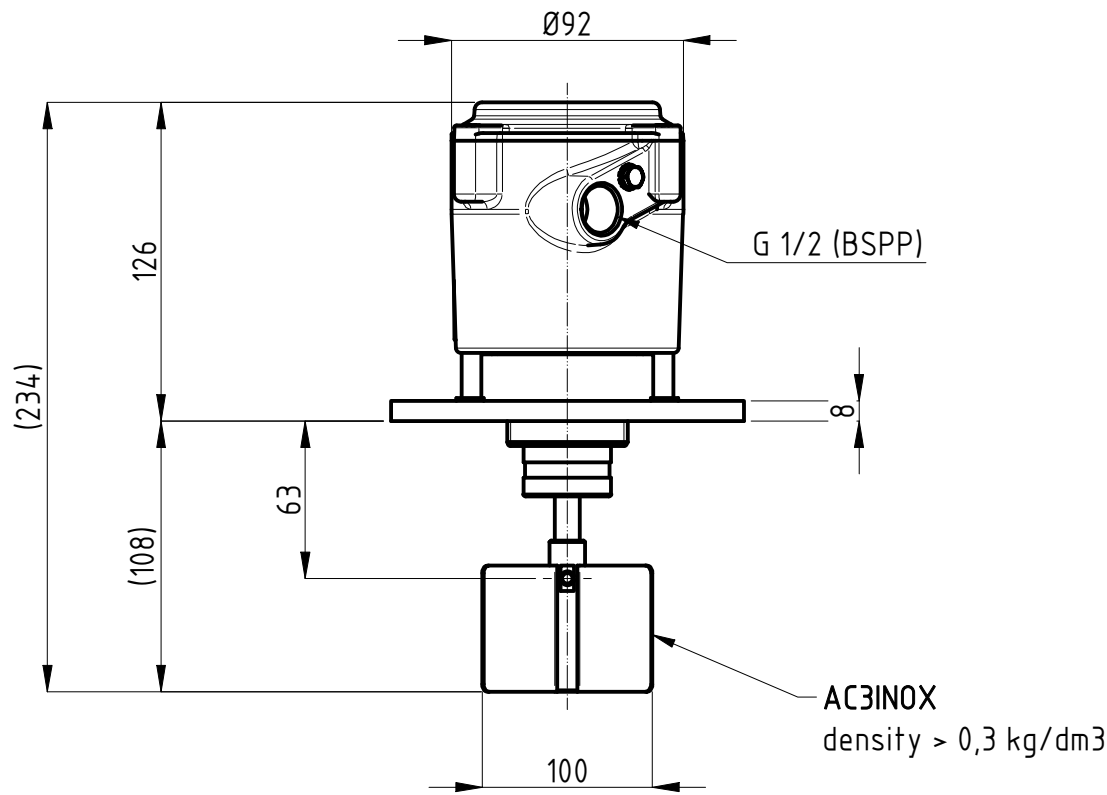
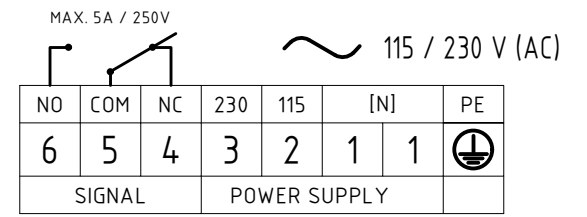
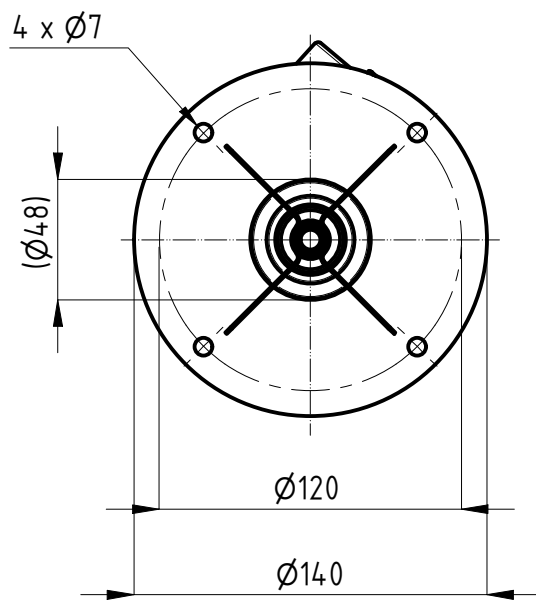
Terminals : male FASTON (.250 series / 6,3x0,8 mm)

PFG09

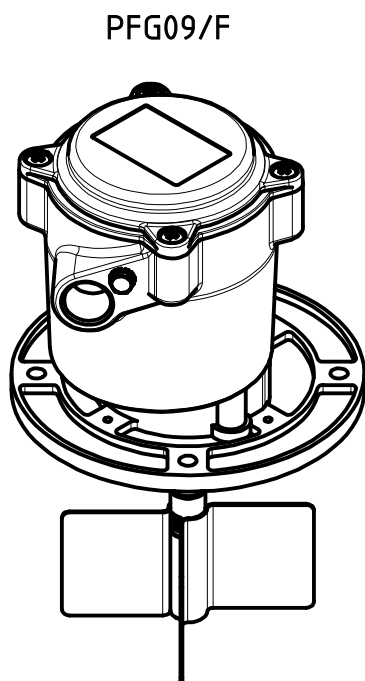
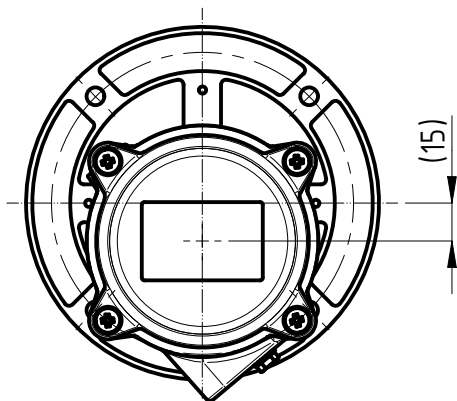


Model	PFG09
Weight	0,9 [kg]
Power supply	- Bivoltage 115/230[V] (50...60Hz) - 4[W] - Bivoltage 24/48[V] (50...60Hz) - 4[W] - DC 24[V] ±15% - 4[W]
Signal	SPDT / max. 5[A]-250VAC
IP grade	IP65
Housing	Aluminium (powder coated)
Connection	G1" 1/2 - Aluminium
Ambient temperature	-20 < Ta < +70 [°C]
Process temperature	-20 < Tp < +70 [°C]
Pressure range	+0,8 ... +1,1 bar
Directives	2011/65/EU (RoHS) 2014/30/EU (EMC) 2014/34/EU (ATEX) 2014/35/EU (LVD)
Ex Marking	Ex II 1/2 D Ex ta/tb IIIC T85°C IP65 Da/Db Ex II 2 G Ex d IIB T6 Gb

<p>© CAMLogic Via dell'Industria 12 42025 Cavriago (RE) - ITALY www.camlogic.it</p>		DRAWING N.	SHEET:
		0602_0010_00	1 OF 5
GENERAL TOL.: ISO 2768-mH	UNLESS OTHERWISE SPECIFIED DIMENSION ARE IN [mm]	DRAWING FROM CAD SYSTEM - REFER TO 3D MODEL FOR MISSING DIMENSION - NO MANUAL MODIFICATION ALLOWED	REV: 0
		SCALE: 1:3	DRAWN NR DATE 21.09.2021



Terminals : male FASTON (.250 series / 6,3x0,8 mm)



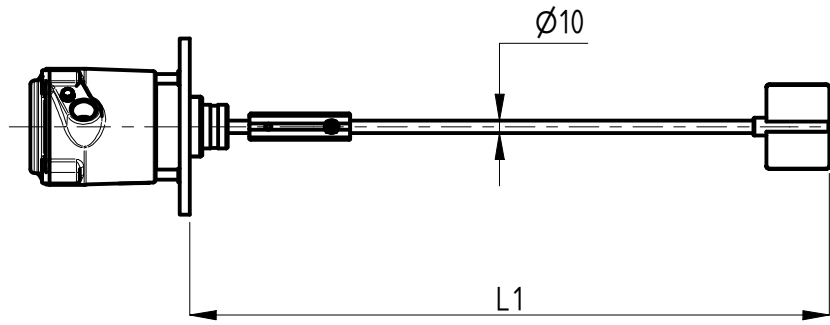
Model	PFG09/F
Weight	1,2 [kg]
Power supply	- Bivoltage 115/230[V] (50...60Hz) - 4[W] - Bivoltage 24/48[V] (50...60Hz) - 4[W] - DC 24[V] ±15% - 4[W]
Signal	SPDT / max. 5[A]-250VAC
IP grade	IP65
Housing	Aluminium (powder coated)
Connection	Flange - Aluminium
Ambient temperature	-20 < Ta < +70 [°C]
Process temperature	-20 < Tp < +70 [°C]
Pressure range	+0,8 ... +1,1 bar
Directives	2011/65/EU (RoHS) 2014/30/EU (EMC) 2014/34/EU (ATEX) 2014/35/EU (LVD)
Ex Marking	Ex II 1/2 D Ex ta/tb IIIC T85°C IP65 Da/Db Ex II 2 G Ex d IIB T6 Gb

<p>® CAMLogic</p> <p>Via dell'Industria 12 42025 Cavriago (RE) - ITALY www.camlogic.it</p>	<p>CAMLOGIC®</p>	DRAWING N.	SHEET:
		0602_0010_00	2 OF 5
GENERAL TOL.: ISO 2768-mH	UNLESS OTHERWISE SPECIFIED DIMENSION ARE IN [mm]	DRAWING FROM CAD SYSTEM - REFER TO 3D MODEL FOR MISSING DIMENSION - NO MANUAL MODIFICATION ALLOWED	REV: 0
		SCALE: 1:3	DRAWN NR DATE 21.09.2021

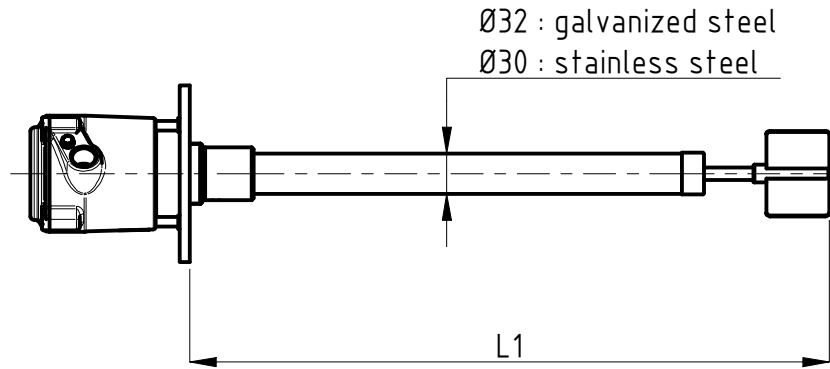
**EXTENSIONS**

**L1 [mm]**

Extension w/o protection  
 PSP : galvanized steel  
 PSPX : stainless steel



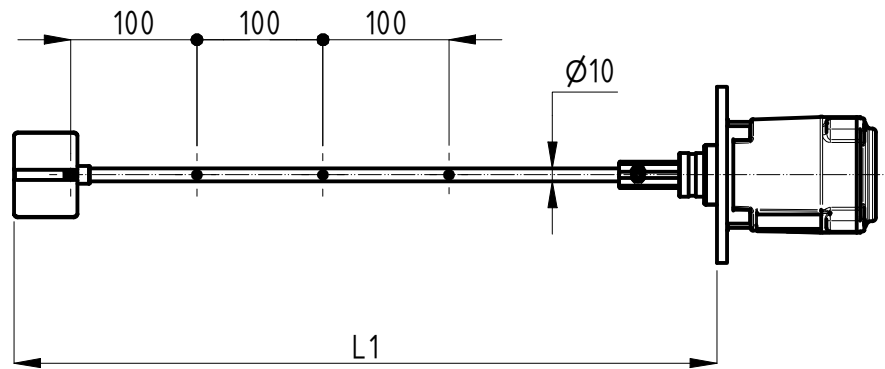
Extension with external protection  
 PCP : galvanized steel  
 PCPX : stainless steel



200
300
400
500
600
700
800
900
1100
1400
1700
1900
2400
2900
other lengths available on request, up to 3m

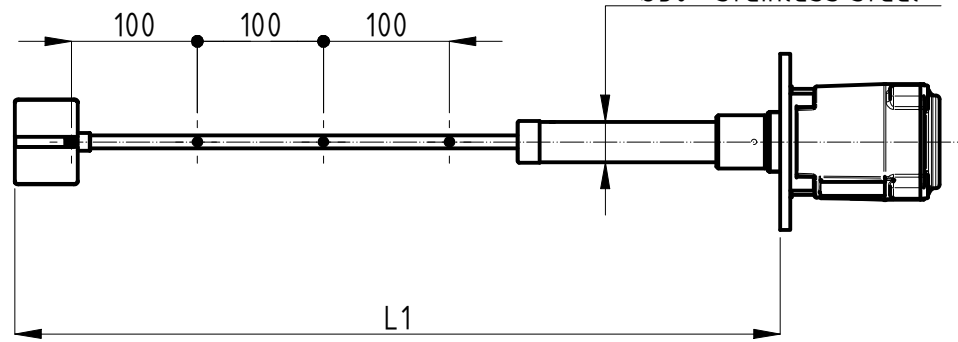
**L1 [mm]**

500
600
700
800
900
1100
1400
1700
1900
2400
2900
other lengths available on request, up to 3m



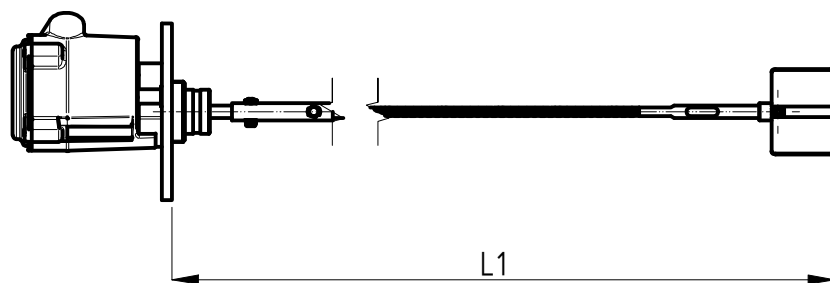
Adjustable extension w/o protection  
 PRS : galvanized steel  
 PRSX : stainless steel

Ø32 : galvanized steel  
 Ø30 : stainless steel



Extension with external protection  
 PRP : galvanized steel  
 PRPX : stainless steel

Flexible extension  
 PF : galvanized steel



<b>L1 [mm]</b>
500
600
700
800
900
1000
1200
1500
2000
2500
3000
4000

<b>L1 [mm]</b>
5000
6000
7000
8000
9000
10000
11000
12000
other lengths available on request, up to 12m

NOTE : lenghts may slightly differ from the tables according to the type of connection, model and paddle chosen

**CAMLogic**  
 Via dell'Industria 12  
 42025 Cavriago (RE) - ITALY  
 www.camlogic.it

**CAMLOGIC**

DRAWING N. 0602\_0010\_00

SHEET: 3 OF 5

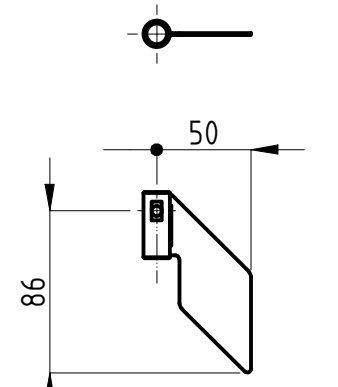
GENERAL TOL.: ISO 2768-mH

UNLESS OTHERWISE SPECIFIED DRAWING FROM CAD SYSTEM - REFER TO 3D MODEL FOR MISSING DIMENSION - NO MANUAL MODIFICATION ALLOWED

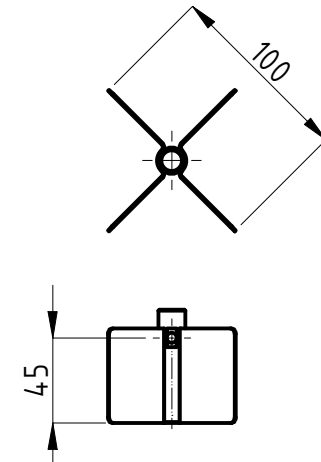
SCALE: 1:6

DRAWN NR DATE 30.09.2021

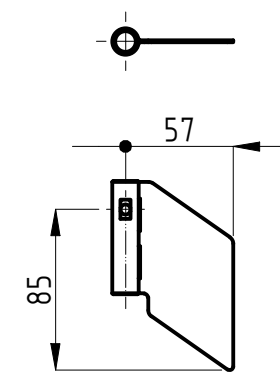
SIZE UNI A3



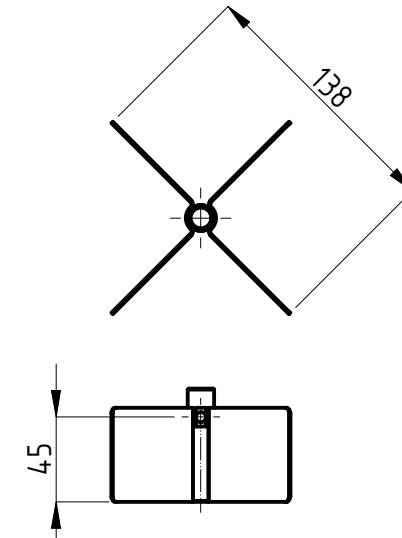
**AC1 INOX**  
AISI 304  
density > 1.0 kg/dm<sup>3</sup>



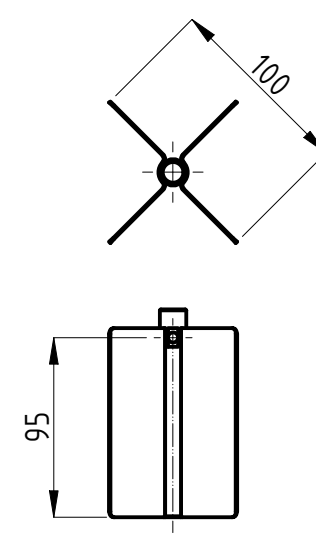
**AC3 INOX**  
AISI 304  
density > 0.3 kg/dm<sup>3</sup>



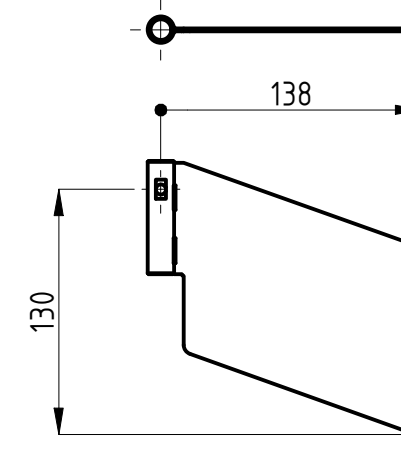
**AC4 INOX**  
AISI 304  
density > 0.5 kg/dm<sup>3</sup>



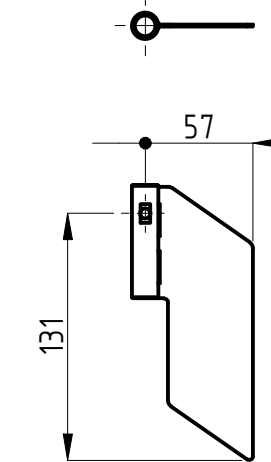
**AC5 INOX**  
AISI 304  
density > 0.2 kg/dm<sup>3</sup>



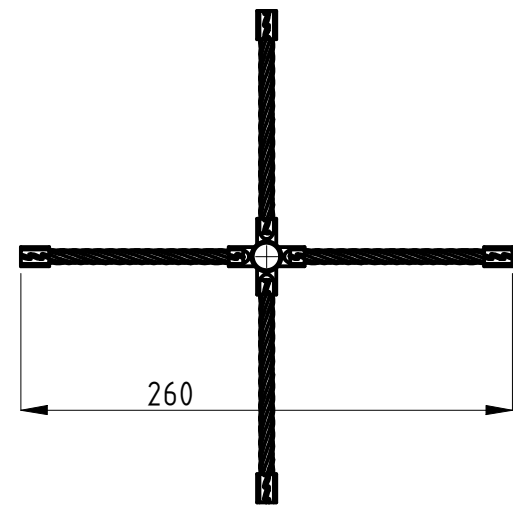
**AC5L INOX**  
AISI 304  
density > 0.2 kg/dm<sup>3</sup>



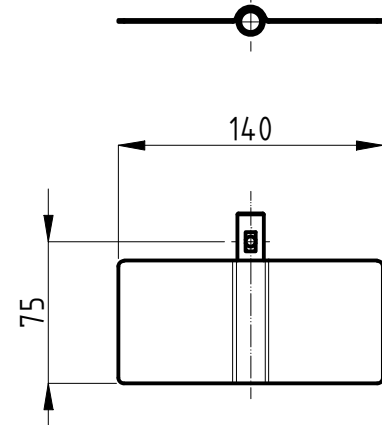
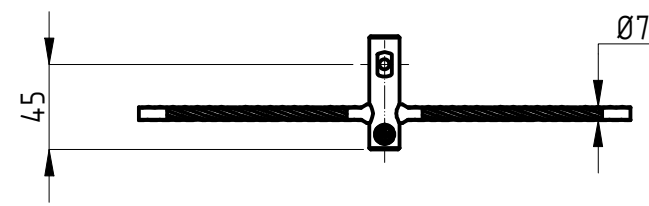
**AC6 INOX**  
AISI 304  
density > 0.1 kg/dm<sup>3</sup>



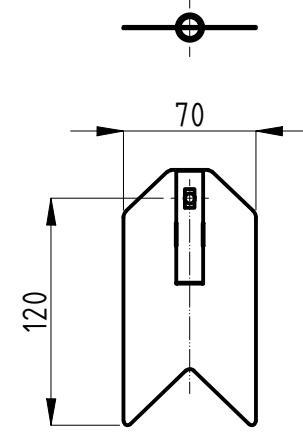
**AC7 INOX**  
AISI 304  
density > 0.3 kg/dm<sup>3</sup>



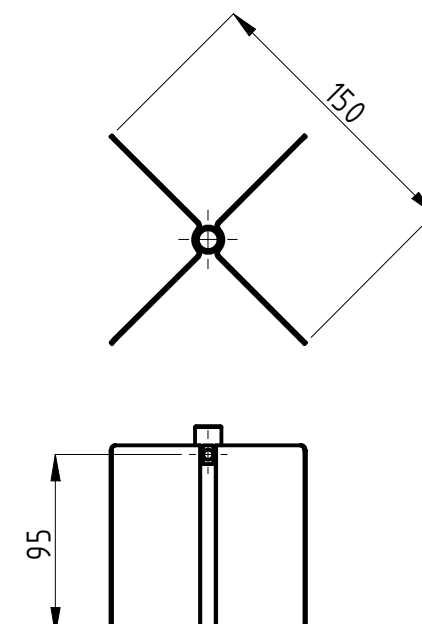
**AC8**  
galvanized steel (wires)  
density > 2.0 kg/dm<sup>3</sup>



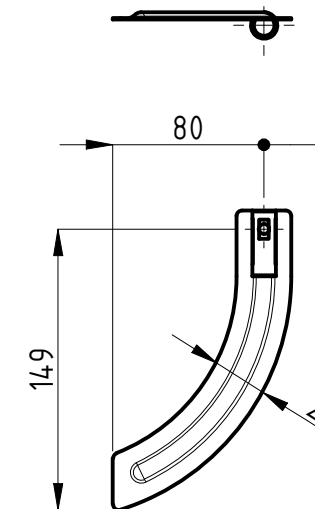
**AC9 INOX**  
AISI 304  
density > 0.2 kg/dm<sup>3</sup>



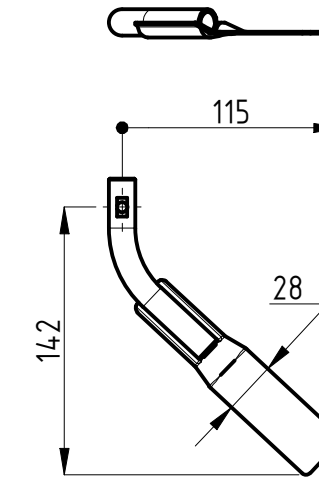
**AC10 INOX**  
AISI 304  
density > 0.6 kg/dm<sup>3</sup>



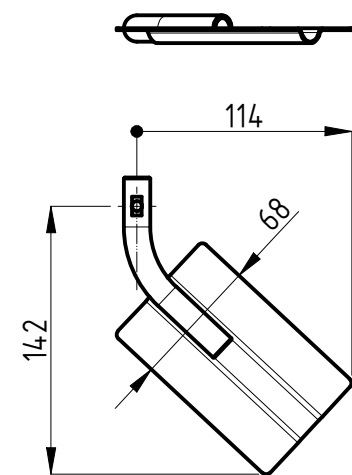
**AC11 INOX**  
AISI 304  
density > 0.1 kg/dm<sup>3</sup>



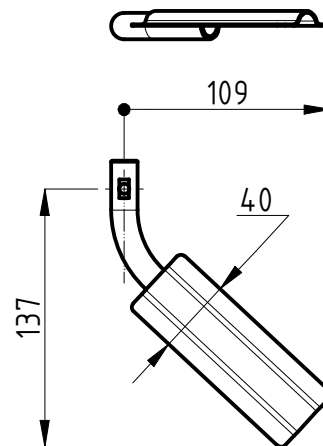
**AC12 INOX**  
AISI 304  
density > 0.4 kg/dm<sup>3</sup>



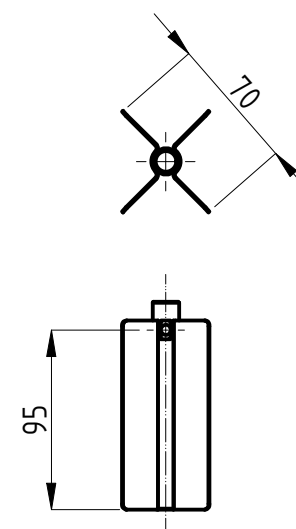
**AC14 INOX**  
AISI 304  
density > 0.4 kg/dm<sup>3</sup>



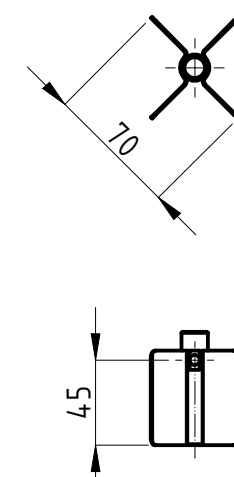
**AC15 INOX**  
AISI 304  
density > 0.2 kg/dm<sup>3</sup>



**AC16 INOX**  
AISI 304  
density > 0.3 kg/dm<sup>3</sup>



**AC17 INOX**  
AISI 304  
density > 0.4 kg/dm<sup>3</sup>

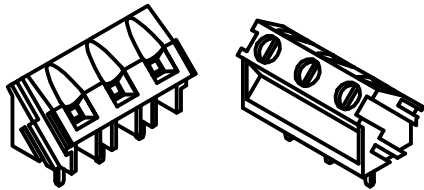


**AC18 INOX**  
AISI 304  
density > 0.7 kg/dm<sup>3</sup>

## OPTIONS

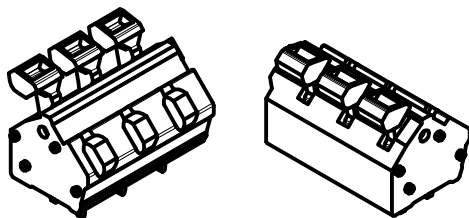
### *SCREW TERMINAL BLOCK*

Terminals with screw terminal design  
(flat head)  
0,05 - 2,5mm<sup>2</sup> (AWG30 - AWG12)



### *SPRING TERMINAL BLOCK*

Terminals with spring terminal design.  
No tool needed for wires connection.  
0,13 - 2,5mm<sup>2</sup> (AWG26 - AWG14)



### *4rpm GEARMOTOR (4R)*

Increase paddle speed (4 rpm) to reduce product  
detection delay time (response time ~ 1,5s)

<b>® CAMLogic</b> Via dell'Industria 12 42025 Cavriago (RE) - ITALY www.camlogic.it	<b>CAM LOGIC</b> ®	DRAWING N.	SHEET:
		0602__0010__00	5 OF 5
GENERAL TOL.: ISO 2768-mH	UNLESS OTHERWISE SPECIFIED DIMENSION ARE IN [mm]	DRAWING FROM CAD SYSTEM - REFER TO 3D MODEL FOR MISSING DIMENSION - NO MANUAL MODIFICATION ALLOWED	REV: 0
		SCALE: 1:1	DRAWN NR DATE 19.10.2021